



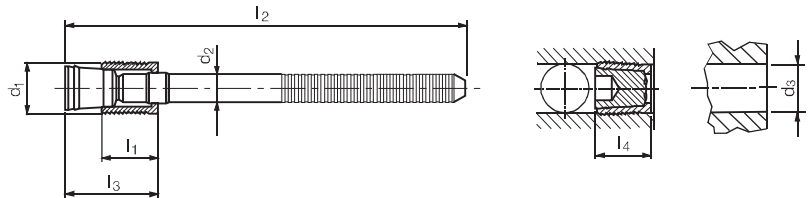
SEALING PLUGS

SERIES SK 550

One piece construction
Ideal for automated high production requirements

Material

Sleeve: Case Hardening Steel, Gun metal-finish
Mandrel: Heat treatable steel, Special oil film lubrication



KOENIG-EXPANDER®

Important: See installation instruction on page 96
Installation requirements on pages 100–106

3D DATA: <http://kvt.partcommunity.com>

| Part Number | d ₁ | l ₁ | d ₂ | l ₂ | l ₃ max. | l ₄ max. | d ₃ +0.12 0 | Packaging Unit | |
|-------------|----------------|----------------|----------------|----------------|---------------------|---------------------|------------------------------|----------------|------|
| SK550-040 | 4,0 | 4,5 | 2,50 | 39 | 9,0 | 6,5 | 4,0 | 100 | 1000 |
| SK550-050 | 5,0 | 5,5 | 3,00 | 41 | 10,0 | 7,5 | 5,0 | 100 | 1000 |
| SK550-060 | 6,0 | 6,5 | 3,40 | 43 | 12,0 | 8,0 | 6,0 | 100 | 500 |
| SK550-070 | 7,0 | 7,5 | 4,10 | 38 | 14,0 | 9,0 | 7,0 | 100 | 500 |
| SK550-080 | 8,0 | 8,5 | 4,20 | 40 | 15,0 | 10,5 | 8,0 | 100 | 500 |
| SK550-090 | 9,0 | 9,5 | 4,50 | 43 | 17,0 | 11,0 | 9,0 | 100 | 250 |
| SK550-100 | 10,0 | 10,5 | 4,75 | 45 | 19,0 | 12,5 | 10,0 | 100 | 250 |

Dimensions in millimeters

| Series SK mm | Base material of the Installation | | | | | | |
|--------------------|---|-----------------|-----------------------|-------------------------|---------------------------|---|--------------------------|
| | ① | ② | ③ | ④ | ⑤ | ⑥ | ⑦ |
| | ETG-100 / 44SMn28 AISI 1144 | C15Pb 1.0403 | EN-GJL-250 EN 1561 | EN-GJS-500-7 EN 1563 | AlCu4Mg1 EN AW-2024-T3 | AiMgSiPb EN AW-6012-T6 | G-AiSi7Mg EN AC-42100 |
| Ø 4 – 10 | 1.600 bar / 23.200 psi 500 bar / 7.200 psi | | | | | 1.400 bar / 20.300 psi 450 bar / 6.500 psi | |

Proof Pressure Test [Ⓢ]

Max. allowable Working Pressure = Nominal Pressure